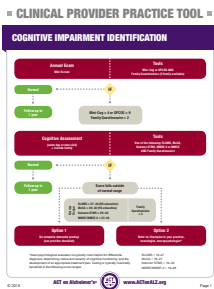




DEMENTIA-SPECIFIC PRACTICE TOOLS AND RESOURCES FOR PROVIDERS

Use these ACT on Alzheimer's® provider practice tools and resources with patients who have memory concerns and to support their care partners. These best practice tools incorporate recognized care standards as well as input from community stakeholders and people with dementia.



Clinical Provider Practice Tool

Provides physicians a streamlined protocol for managing cognitive impairment and guiding decisions for cognitive assessment, diagnosis and disease management.

www.actonalz.org/provider-practice-tools



View tutorial videos and webinars on administering and scoring cognitive assessment instruments (MiniCog, SLUMS, MoCA) and communicating assessment results at: www.actonalz.org/video-tutorials



Delivering the Diagnosis [Video]

Portrays an actual physician-to-patient interaction for delivering an Alzheimer's diagnosis during a medical visit.

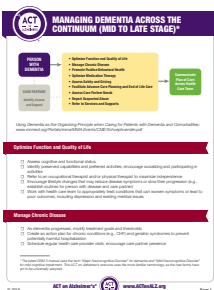
www.actonalz.org/videos



After a Diagnosis

Gives action steps and tips that medical and community provider professionals can share with a person and care partner when Alzheimer's or dementia is diagnosed. Includes support and resource information.

www.actonalz.org/provider-practice-tools

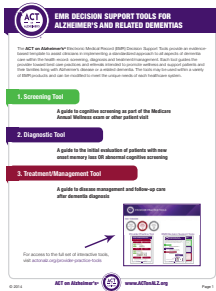


Managing Dementia Across the Continuum

Provides physicians a streamlined protocol for treating, managing and supporting persons with mid- to late-stage dementia, including information on non-pharmacological approaches to managing behavioral symptoms.

www.actonalz.org/provider-practice-tools

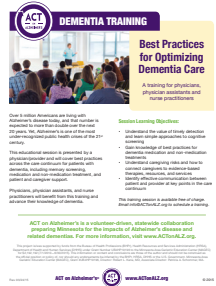




Electronic Medical Record (EMR) Decision Support Tool

Provides a template to assist clinicians in implementing a standardized approach to all aspects of dementia care within the health record.

www.actonalz.org/provider-practice-tools



Best Practices for Optimizing Dementia Care [Training]

Trains providers on optimal dementia care, including timely detection, cognitive screening, medication and non-medication treatments, effective communication along the care continuum, and understanding caregiving risks.

www.actonalz.org/dementia-education

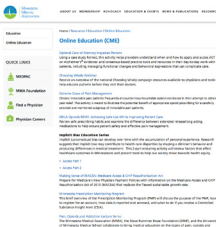
To schedule a training, contact: info@ACTonALZ.org



Dementia Curriculum

Provides a 10-module curriculum (developed by leading experts in Minnesota) on understanding dementia as a condition. Educators, practicing professionals and students across multiple disciplines will benefit from specific learning objectives.

www.actonalz.org/dementia-education



Optimal Care of Memory-Impaired Persons [Webinar]

Helps providers understand when and how to apply practice tools in their day-to-day work with patients, including managing functional changes and behaviors that can complicate care and negatively impact outcomes. CME credit available.

www.mnmed.org/alzheimers

ACT on Alzheimer's is a volunteer-driven, statewide collaboration preparing Minnesota for the impacts of Alzheimer's disease and related dementias. Visit www.ACTonALZ.org.

