



EMR DECISION SUPPORT TOOLS FOR ALZHEIMER'S AND RELATED DEMENTIAS

The **ACT on Alzheimer's**® Electronic Medical Record (EMR) Decision Support Tools provide an evidence-based template to assist clinicians in implementing a standardized approach to all aspects of dementia care within the health record: screening, diagnosis and treatment/management. Each tool guides the provider toward best care practices and referrals intended to promote wellness and support patients and their families living with Alzheimer's disease or a related dementia. The tools may be used within a variety of EMR products and can be modified to meet the unique needs of each healthcare system.

1. Screening Tool

A guide to cognitive screening as part of the Medicare Annual Wellness exam or other patient visit

2. Diagnostic Tool

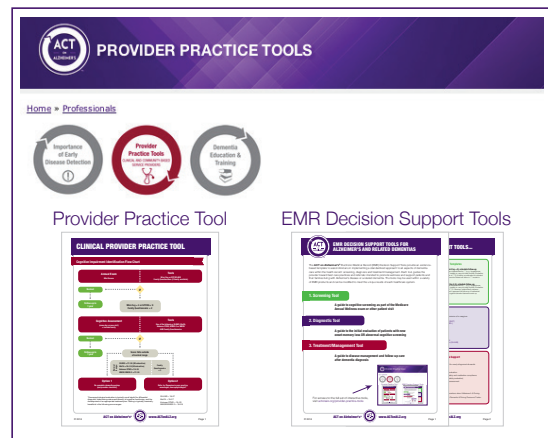
A guide to the initial evaluation of patients with new onset memory loss OR abnormal cognitive screening

3. Treatment/Management Tool

A guide to disease management and follow-up care after dementia diagnosis



For access to the full set of interactive tools, visit actonalz.org/provider-practice-tools



A NEW SET OF DECISION SUPPORT TOOLS...

1. Screening Tool

Automated Patient Instructions

- Patient instructions for coping with memory loss / brain health / healthy aging.
- Please bring all over the counter and prescription medications to the next appointment.
- Please bring a family member or friend (care partner) to the next appointment.

Memory & Aging Progress Note Templates

- Progress Note: Screen abnormal (Mini-Cog < 4), schedule follow-up**
Patient screened today for cognitive changes characterized by *** (e.g., forgetfulness, repeating self, misplacing things, confusion, inability to carry out daily routine). Evaluation with the Mini-Cog yielded an abnormal score of ***/5. A follow-up evaluation is indicated to assess for possible cognitive disorder/dementia. Patient will return in *** weeks to complete work-up.
- Progress Note: Screen normal (Mini-Cog 4-5), schedule follow-up**
Patient screened today for cognitive changes characterized by *** (e.g., forgetfulness, repeating self, misplacing things, confusion, inability to carry out daily routine). Evaluation with the Mini-Cog yielded a normal score of ***/5. However, patient/family express concern regarding deteriorating cognition and it appears that follow-up is warranted. Patient will return in *** weeks to complete cognitive disorder/dementia work-up.
- Create your own note**

2. Diagnostic Tool

History

History questions to be asked in the presence of a caregiver.

Family Questionnaire
Functional Assessment Staging of AD (FAST)
Instrumental Activities of Daily Living (IADL)
Activities of Daily Living (ADL)
High Yield History Questions

Cognitive Screening

Montreal Cognitive Assessment (MoCA)
St. Louis University Mental Status Exam (SLUMS)

3. Treatment/ Management Tool

Consults, Referrals, Education & Support

Indication: Safety/Driving

A formal driving evaluation is recommended for newly diagnosed dementia patients who drive.

- OCCUPATIONAL THERAPY – Driving evaluation
- OCCUPATIONAL THERAPY – Home safety and medication compliance (e.g., medication management, home safety evaluation)
- OCCUPATIONAL THERAPY – Fall risk assessment

Patient and Care Partner Instructions

- Read *At the Crossroads: Family Conversations about Alzheimer's & Driving*.
- Visit the Alzheimer's Association Online Dementia & Driving Resource Center.